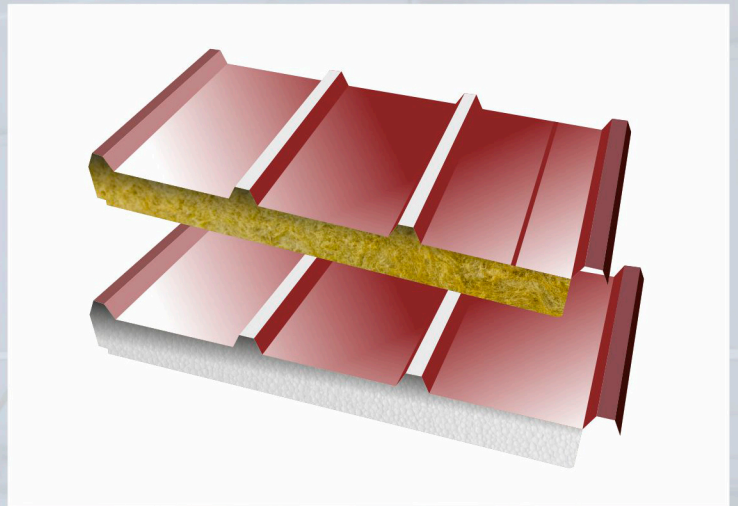
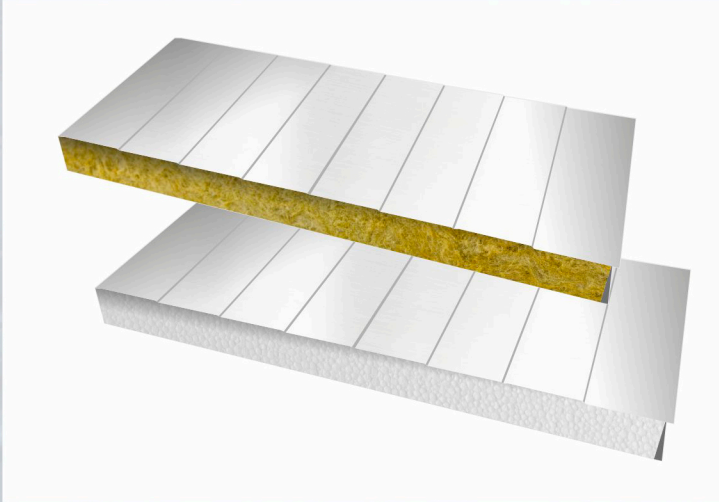


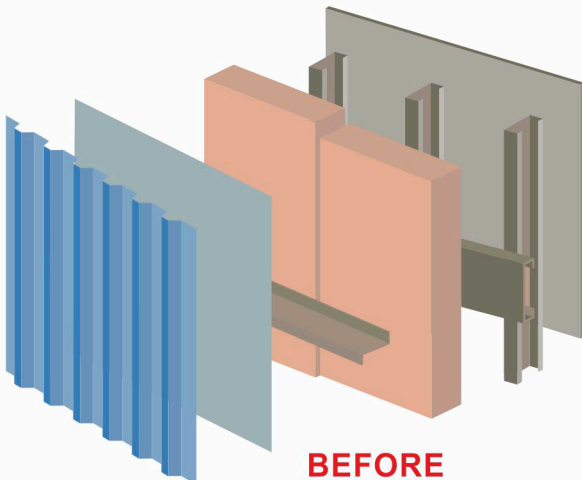
Insulated Metal Panels



Versatile Single Component System

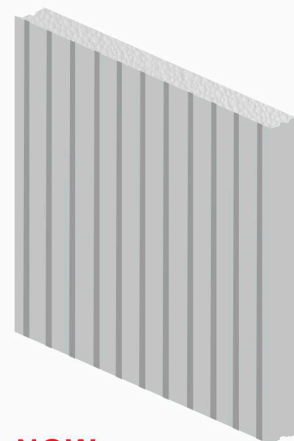


Multiple Component Construction



BEFORE

Single Component



NOW

VS

Why Insulated Metal Panels

Benefits



Faster Build

- Faster on-site installation time compared to traditional multi-part systems, as they are a single component installed by a single trade.
- Factory assembled insulation and dual metal facing panels to create a single high strength unit.
- One step installation, increasing the speed of build and minimizing delays by approx 50%.
- Meets building codes.



Energy Efficient

- Interlocking groove joints with concealed fasteners create a water and air tight seal, stabilizing interior environments and saving energy costs.
- Superior thermal insulation capabilities compared to other insulating materials. (Roxul R-Value: 3.6/in, EPS R-Value: 4.04/in)
- The insulated panels are wrapped around the entire exterior of the building, providing the best thermal envelope.
- No thermal drift.



Measurable Savings

- Insulated panels have a high strength-to-weight ratio allowing for longer spans compared to other construction methods, reducing both transport and installation cost.
- Single component installation reduces trades involved and labor costs.
- Reduces operation costs and maintenance, while still having the same life span as other building materials.



Design Flexibility

- Very versatile with a variety of colours, finishes, accessories, profiles and trims with hidden fastener systems.
- Solutions for both vertical and horizontal applications.
- Design is not compromised when incorporating doors, windows and other construction materials into the design.



Sustainable

- Made with minimum 30% recycled steel.
- 100% recyclable and reusable at the end of its service life.
- Contributes to LEED® credits and Net-Zero Energy targets.
- Closed cell insulation resists moisture and does not support growth of mould.

Colour Selection

STANDARD / TEXTURED - WALL & ROOF

BLACK
RAL 9005



☐ OUTSIDE

SLATE GREY
RAL 7024



☐ OUTSIDE

TERRA COTTA
RAL 8004



☐ OUTSIDE

CHOCOLATE BROWN
RAL 8014



☐ OUTSIDE

COLONIAL RED
RAL 3011



☐ OUTSIDE

BLUE GREY
RAL 7016



☐ OUTSIDE

JUNGLE GREEN
RAL 6020



☐ OUTSIDE

BROWN MOCHA
RAL 8019



☐ OUTSIDE

WALL ONLY

WHITE RAL 9010
FLAT



☐ OUTSIDE
☐ INSIDE

WHITE RAL 9002
FLAT



☐ OUTSIDE
☐ INSIDE

SILVER RAL 9006
FLAT



☐ OUTSIDE
☐ INSIDE

WHITE QC 9862
TEXTURED



☐ OUTSIDE
☐ INSIDE

PREMIUM COLOURS

NOVA „Copper“
FLAT



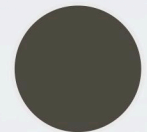
☐ OUTSIDE

ANTOCHADO PL
FLAT



☐ OUTSIDE

BURNISHED
SLATE

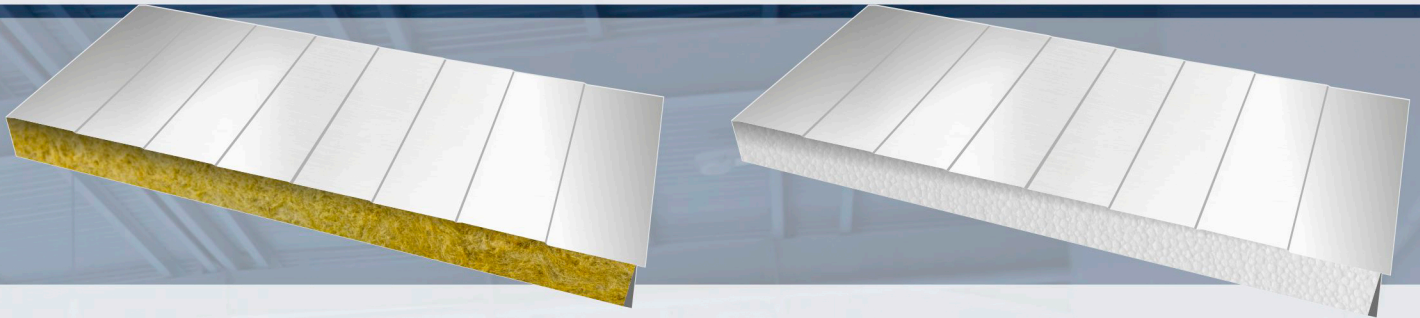


☐ OUTSIDE



What is an Insulated Metal Panel

An insulated metal panel is a lightweight modular building material which forms the entire building envelope (walls and roof), thermal insulation, vapour barrier, weatherproofing, fire resistance (mineral fiber insulated panels) and finish. Our panels consist of metal facings bonded to a structural mineral wool or EPS (Expanded Polystyrene) core, available with unique fastener system for increased aesthetic appeal.



Roxul Insulation Benefits

Fire Resistant

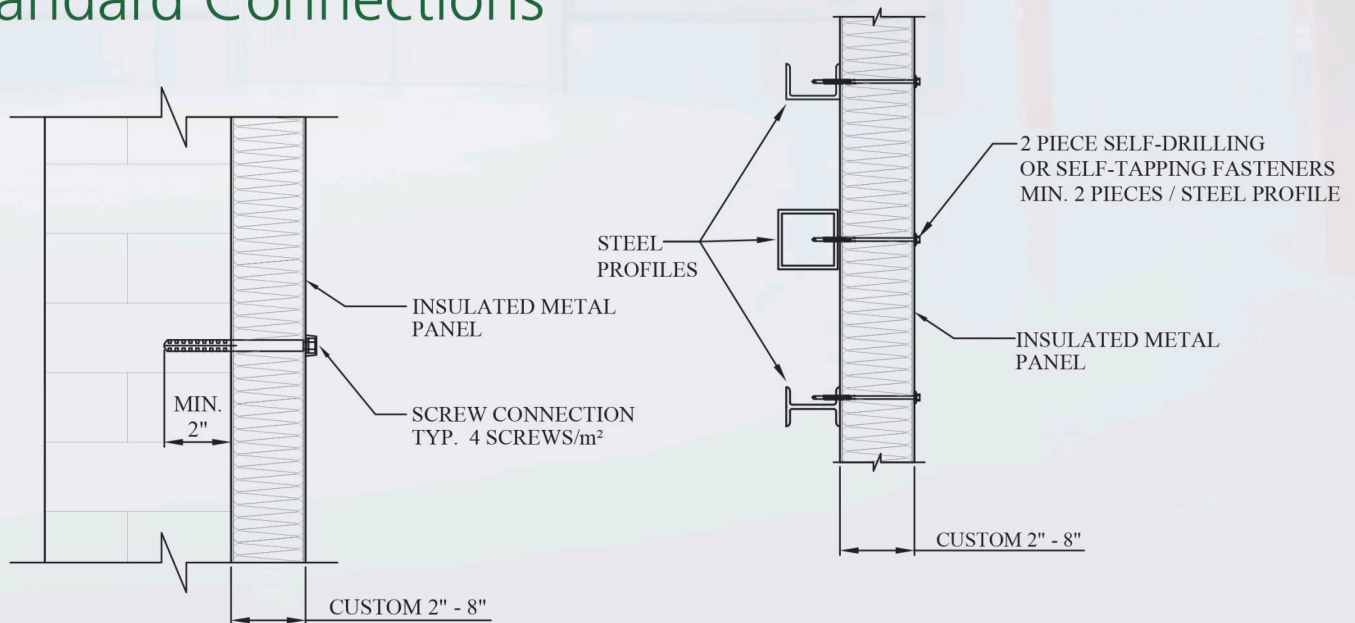
- Withstand temperatures up to 2150°F.
- Water Repellent (R-Value not affected)
- Resistant to rot, mildew, mold, and bacterial growth
- Safer indoor environment
- Made from natural stone & recycled material
- Dimensional stability
- Roxul insulation is more expensive than EPS, but has overall better value
- Noise barrier

EPS Benefits (ECONOMICAL)

Long-term R-value

- Energy efficient
- Constant thermal resistance
- Measurable energy savings
- Strength
- Sustainability
- No growth of bacteria, nor will it decay over time
- Dimensional stability
- Chemical inertness

Standard Connections



CONNECTION TO MASONRY

SCALE: NOT TO SCALE

CONNECTION TO STEEL

SCALE: NOT TO SCALE

Specifications

MINERAL WOOL FIBRE

ROXUL products are mineral wool fibre insulations made from basalt rock and slag. This combination results in a non-combustible product and a melting point of approx. 2150°F (1177°C), which gives it excellent fire resistant properties. ROXUL mineral wool is a water repellent yet vapour permeable material.

Compliance and Performance:

ASTM E 84 (UL723)

Surface Burning Characteristics:

Flame Spread = 0

Smoke Developed = 5

ASTM E 136

Behavior of Materials at 750°C(1382°F):

Non-Combustible

CAN4 S114

Test for Non-Combustibility:

Non-Combustible

Moisture Resistance:

Moisture Sorption = 0.05%

Dimensional Stability:

ASTM C 356

Linear Shrinkage = 0.19%

Thermal Resistance:

ASTM C 518 (C 177)

R-value/3.6 inch @ 75°F = 4.0hr.ft².F/Btu

RSI value/25.4mm @ 24°C = 0.71m²K/W

Corrosion Resistance:

ASTM C 165

Corrosiveness = Passed

ASTM 795***

Stainless Steel Stress Corrosion Specification as per

Test Methods C871 & C692: U.S. Nuclear Regulatory Commission,

Reg. Guide#1.36: U.S.

Military Spec.'s

MIL-I-24244 (all versions including B and C)

Density:

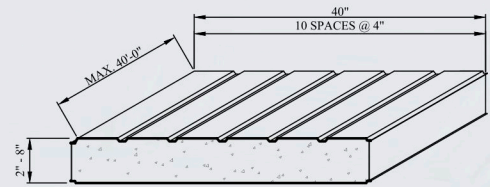
8.5 lbs/ft³ 136 kg/m³

Compressive Strength:

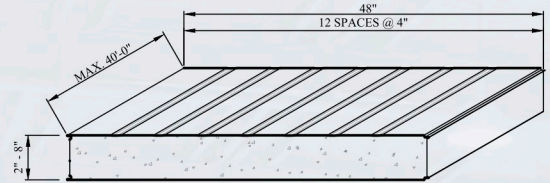
ASTM C 165 @ 10% 4" Board: 6.64psi (45.8kPa)

Panel Profiles

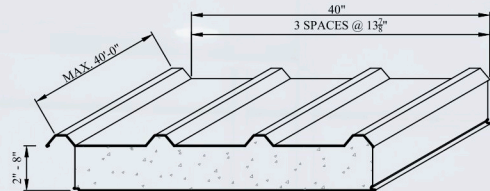
WALL PANEL 10



WALL PANEL 2



ROOF PANEL



EXPANDED POLYSTYRENE (EPS)

EPS insulation HD (High Density) is a moulded expanded polystyrene insulation. EPS is a closed cell, rigid foam plastic insulation that does not contain a blowing agent such as HCFC or HFC that provides a temporary increase in thermal resistance.

- Meets CAN/ULC-S701, Type 2
- **Thermal resistance - RSI 0.70/25 mm R-value 4.04/inch**
- Compressive resistance: 16 psi
- Closed cell insulation resists moisture
- CCMC 12425-L



Distributed by: